

# CamKix Lens Kit - 4in1 - 12x Telephoto

**FOUR GREAT LENSES IN ONE KIT:** Awesome mobile photography for back or front facing cameras. Includes 4 lenses - 12x zoom telephoto lens with manual focus ring, fisheye lens, macro lens and wide angle lens. Combine with your favorite apps to share photos instantly.

**HIGH QUALITY ALUMINUM CONSTRUCTION:** The lenses are made from aluminum to increase the durability of the product.

**WIDE ANGLE AND MACRO LENSES IN A 2-IN-1 SET:** These two small lenses are screwed together for easy storage. To use the wide angle, simply attach both lenses to the case provided. To use the macro lens, simply unscrew the wide angle lens. Wide angle lens is paired with the macro - just screw off the top of the wide angle to unleash the macro power beneath

**UNIVERSAL PHONE HOLDER CAN BE USED WITH MULTIPLE DEVICES AND MOUNTS:** The universal holder can be used with a variety of phones. It also features a standard tripod socket, so it can be used with most tripods and monopods, not just the one included in the kit. The universal phone and lens holder allows you to rotate the lens 360 degrees.

**TWO DIFFERENT TRIPOD USES:** For use with the fisheye, macro, and wide angle lenses: put your phone in the case provided, attach the lens you want to use, place it in the phone holder, and screw onto the tripod. To use with the telephoto lens: put your phone in the case provided, attach the telephoto lens, insert the lens into the holder ring, screw the ring onto the tripod. Mini tripod features extendable/retractable legs for more precise positioning.

**Fisheye:** This lens will give your images a round, fishbowl effect while also acting as a wide angle lens.

**Wide Angle:** With it, you'll now be able to conquer what was once too large a scene to capture. Pop it on and stretch the limits of your lens to get big, long cityscapes, large group shots and more.

**Macro:** Capture minute details of objects in crisp detail, allows you to really get close to your subject.

**12x Telephoto** Get a clear shot of subjects usually too far away to capture.

## **CONTENTS:**

1 x 12x Telephoto Lens

1 x Fisheye Lens

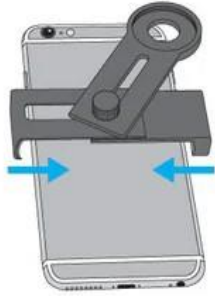
1 x Macro Lens

1 x Wide Angle Lens

1 x Mini Tripod

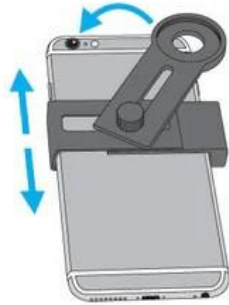
1 x Universal Lens & Phone Holder

1 x Microfiber Cleaning Cloth



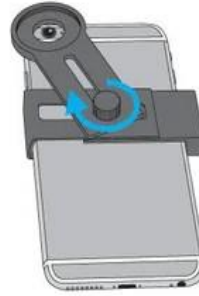
**1 Fit the lens holder**

Slide both parts of the phone clamp inwards to match the width of your phone. Do not tighten the knob yet.



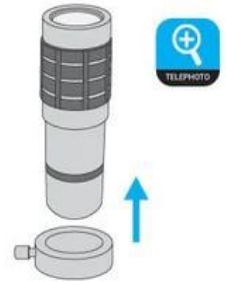
**2 Position the lens opening**

Rotate the lens holder arm towards the camera lens of your phone. If needed, move the phone clamp downwards/upwards.



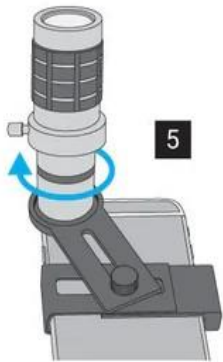
**3 Fasten the lens holder**

When the camera lens of your phone is exactly in the middle of the lens opening, tighten the knob to fasten the lens holder.



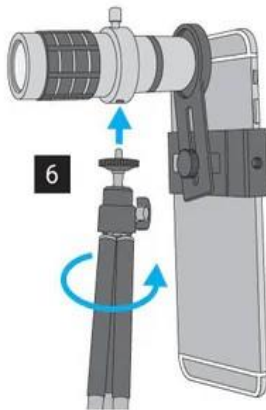
**4 Slide ring on telephoto lens**

Usually, the tripod connection ring is already around the telephoto lens. If not, slide it on the telephoto lens.



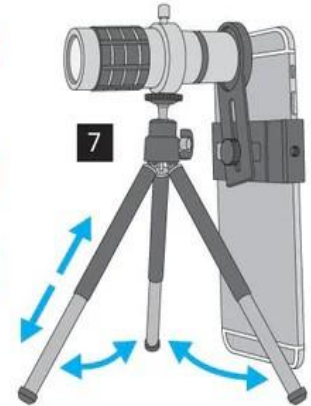
**5 Attach telephoto lens**

Make sure the telephoto lens is positioned straight above the lens opening. Then screw the lens onto the lens holder.



**6 Attach tripod**

Connect the tripod to the telephoto lens ring.

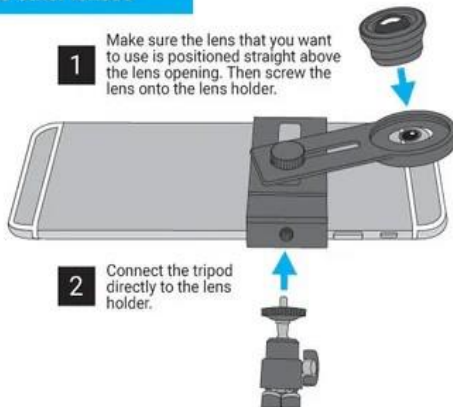


**7 Position tripod legs**

Expand and retract the legs of the tripod for a stabilized position.

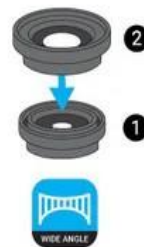
**Using the other lenses**

**1** Make sure the lens that you want to use is positioned straight above the lens opening. Then screw the lens onto the lens holder.



**2** Connect the tripod directly to the lens holder.

**Important note!**



The Wide Angle Lens **2** works only when it is paired with the Macro **1**.

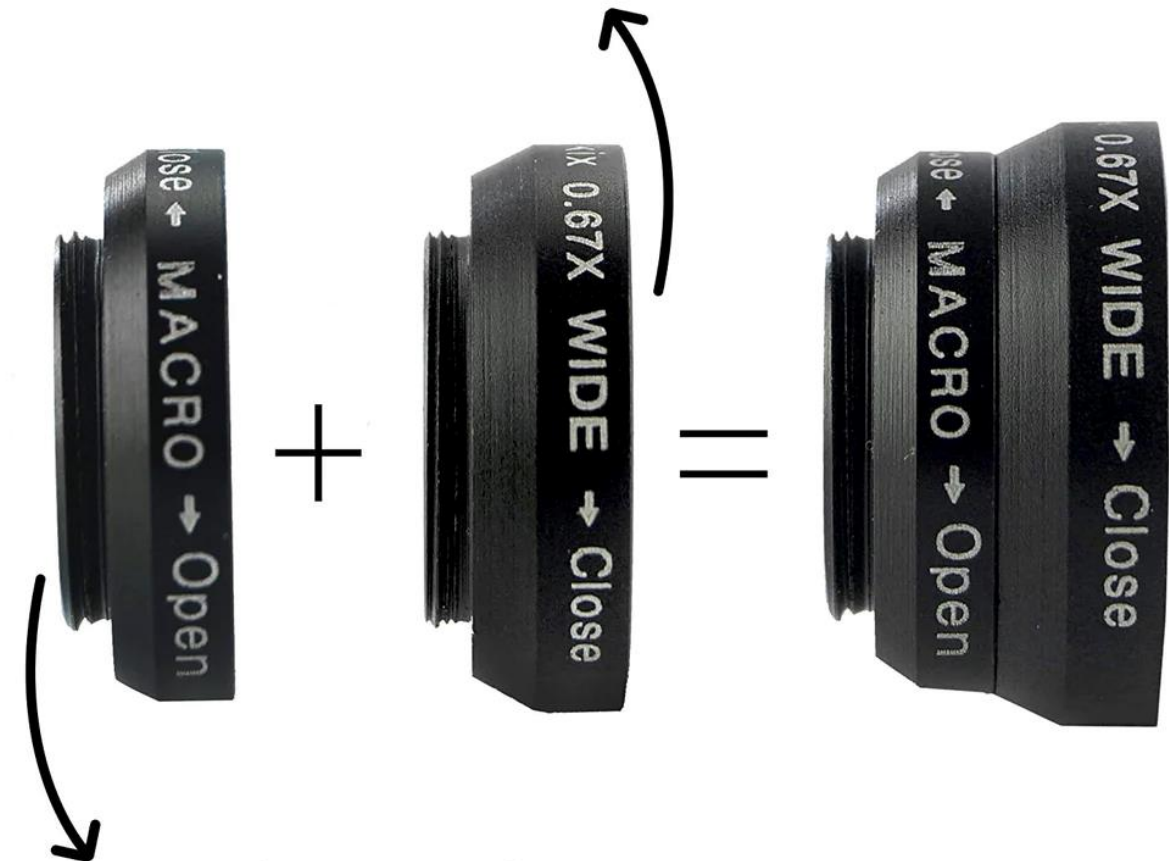


The Macro Lens can be used separately.



The Fish Eye Lens can be used separately.

To use the macro lens



Unscrew and separate it from the wide angle lens